



Ashlawn  
School

**PROSPECTUS**  
2023/24

# Welcome from the Principal



Welcome to Ashlawn School, a warm and forward-thinking school community that combines high quality education with traditional values and high expectations.

Building on a legacy spanning almost 70 years, we are proud to provide an outstanding educational experience for our students.

At Ashlawn, we strive for academic excellence for all, knowing that all students have great potential and should be given every opportunity to fulfil it.

Our wonderful teachers deliver a broad and balanced education through a well-designed, contemporary curriculum and we offer fantastic facilities that cater for all students. As a bi-lateral school, this includes provision for students who have joined us through the 11+, as well as our specialist Modern Foreign Languages stream.

We also pay close attention to supporting the varied needs of all our students and have a dedicated Learning Development Department with specialist teachers, learning mentors and assistants on hand to support students' individual needs.

We passionately believe in promoting a holistic approach to education with a focus on the development of the whole child, not just their academic results. Our students are also encouraged to develop skills and expertise outside of the classroom through our extensive enrichment programme and an effective personal development curriculum, allowing us to nurture all students' talents while supporting their wellbeing.

I am determined that every student will be able to reflect on their time at Ashlawn as happy and fulfilling. A time that has not only enriched their lives and nurtured their aspirations, but that has provided the foundations needed for long term future success.

I hope that this prospectus provides you with a flavour of life at our wonderful school. I look forward to welcoming you to Ashlawn and working in partnership with you to achieve the best possible outcomes for your child.

**Siobhan Evans**  
Principal





*Every Student,  
Every Opportunity*

**Transform your child's future**

---

At Ashlawn School, we believe in the power of education to present the greatest possible life opportunities.

Our core purpose is, therefore, to enable every young person to exceed their potential: to develop a love of learning, to widen their horizons, deepen their confidence and to aspire to all that they can be.

We believe that each student is unique and their learning is enhanced by a shared commitment to their education. Learners, teachers, parents and carers work together as a community to ensure outstanding opportunities for all.



## Proud to be part of the Transforming Lives Educational Trust

---

The Transforming Lives Educational Trust (TLET) believes in the transformative power of learning and its singular ability to broaden horizons, deepen perspectives and extend potential.

Our family of academies will be recognised as the most forward-thinking and innovative organisations within the communities they serve, providing a springboard for our children, young people and staff so that they become exemplary citizens who strive to stretch their potential and become transformers in a diverse and ever-changing world.

## We are:

---

TRANSFORMING TOMORROW, TODAY

## Our Standards

---

### One team, one goal

We are totally united and committed to improve life chances.

### Best daily deal, everyday

We have the highest expectations for all, in all, from all, always.

### No excuses

We see it, own it, sort it.

### Community First

If it's important to you, it's important to us – we care.

## Our Values

---



### **T**end the team

listening to, sharing with and learning from others so that we nurture the potential of all (loyalty)



### **R**each for excellence

only comparing ourselves to the best – seeking to match and then surpass it (excellence)



### **U**tilise innovation

seeking forefront thinking and creativity, and leading the change (courage)



### **S**eize success

holding onto our vision and building on our achievements (tenacity)



### **T**hank as you go

recognising the contribution of others to the Trust's successes (kindness)

## Our Team

---

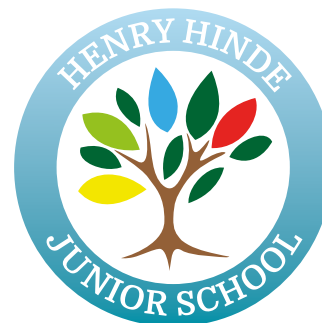
Without exception, everyone is deeply committed to the very highest outcomes, regardless of their role, recognising the strength of collective contribution and effort.

## Our Academies

---



Ashlawn  
School



HOULTON  
SCHOOL



### Academic Excellence for All

---

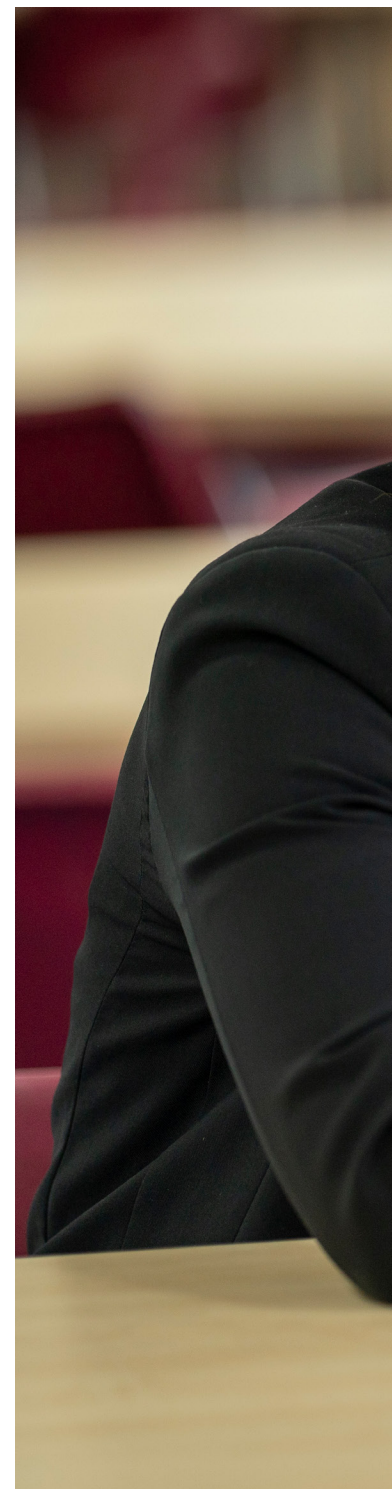
At Ashlawn School our students study a broad and exciting curriculum that equips them with the knowledge and skills they need for the future.

Throughout their time with us, students are encouraged to develop a lifelong love of learning, deepening their knowledge, inspiring their curiosity and nurturing their aspirations at every key stage.

We place the highest value on the quality of teaching and our lessons are structured around an agreed set of principles for effective learning, with clear routines and high expectations to support these.

Alongside the traditional subjects, we offer a dedicated personal development curriculum, focussing on building important life skills, developing an understanding and awareness of different cultures and beliefs and nurturing personal qualities that will help our students to become exemplary citizens of the future.

As an inclusive school, we are also committed to enabling young people to achieve their full potential, providing a personalised approach and additional support where needed, to allow every individual to flourish.





"If there is ever something you don't understand in class, you can ask the teachers and they will help you (all of my teachers are so kind)."

Year 7 student



“I have been at Ashlawn for the last five years and have enjoyed every minute of my time here.”

**Year 11 student**





### Skills in the Sciences

---

Preparing our students for the future world of work is at the forefront of our ambitions, so naturally Science, Technology, Engineering and Mathematics (STEM) is a key part of our curriculum.

Alongside teaching fundamental skills for future work and life, our STEM provision also nurtures critical thinking skills, fostering curiosity and instilling a passion for innovation.

At Key Stage 3, our students explore the fundamentals of STEM through subjects including Biology, Chemistry, Physics, Maths, Design Technology and Food and Nutrition, with the opportunity to take up specialist Engineering courses at Key Stage 4 and 5.

Students also have the chance to participate in a host of inspiring STEM opportunities, some examples include our Science Club, the UK Mathematics Trust Challenges, CREST awards, Royal Society courses and Women in Physics conferences.

